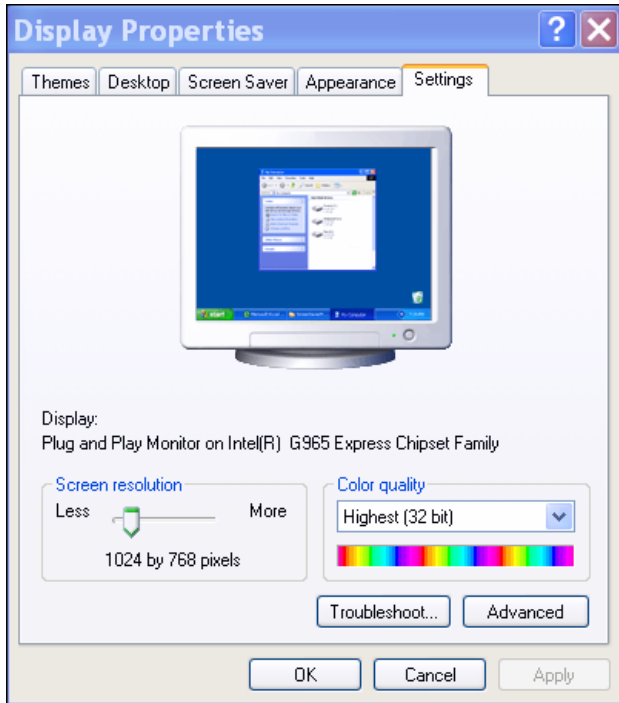


How to setup the Z software to run with the “Best Look” setup inside a Terminal Services Session window on a PC Desktop.

1.. Set the user’s PC workstation to a resolution of 1024x768.

To do this you can right-click the PC Desktop, then select properties -> Settings -> Screen Resolution, set to 1024x768 and then apply and OK. See example Image below:



2.. Create a RDP connection for the user and save it on their Desktop.

You should be able to locate the Remote Desktop Client in one of the two locations below:

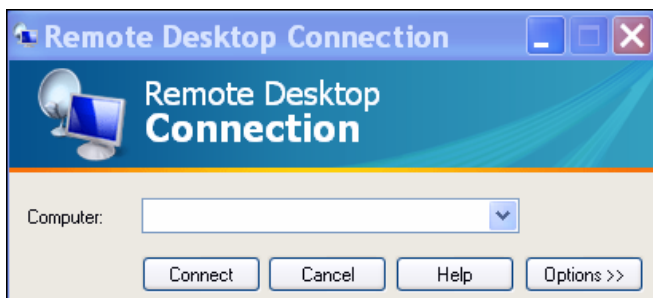
START -> All Programs -> Accessories -> Communication -> Remote Desktop Connection

Or

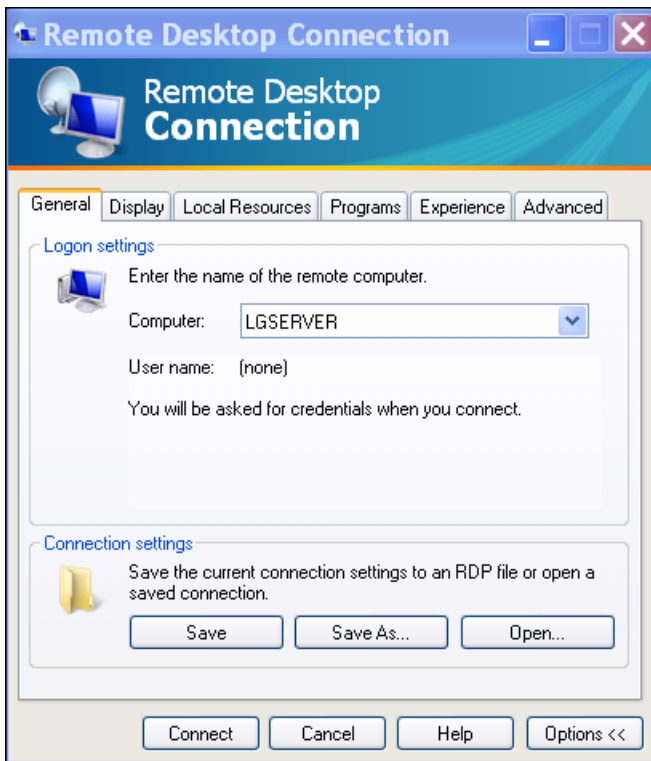
START -> All Programs -> Accessories -> Remote Desktop Connection

Once you launch the Remote Desktop Connection client you will see something similar to below:

Note – The client could be different on the workstation you are working with depending on whether you have the latest updates from MicroSoft installed or not.

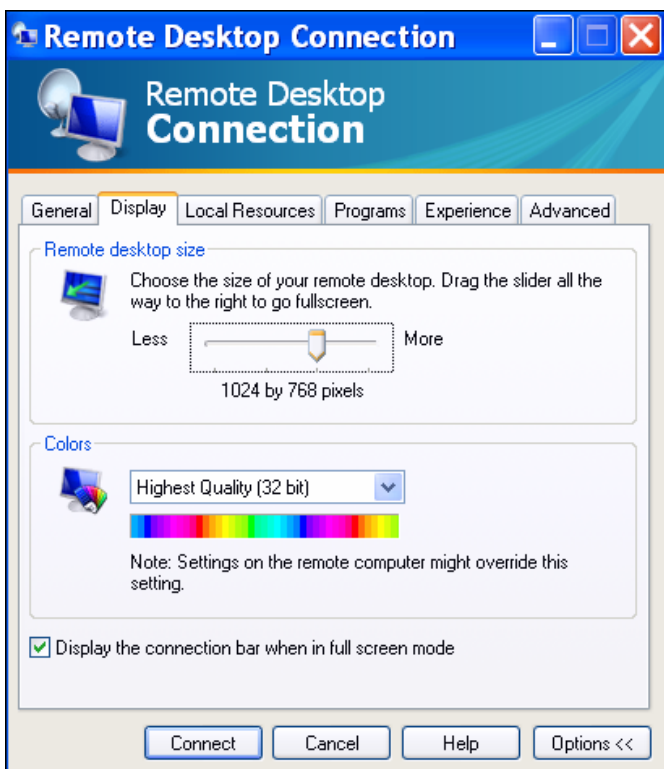


Click on the “Options” button above to get to the multi tab window below:



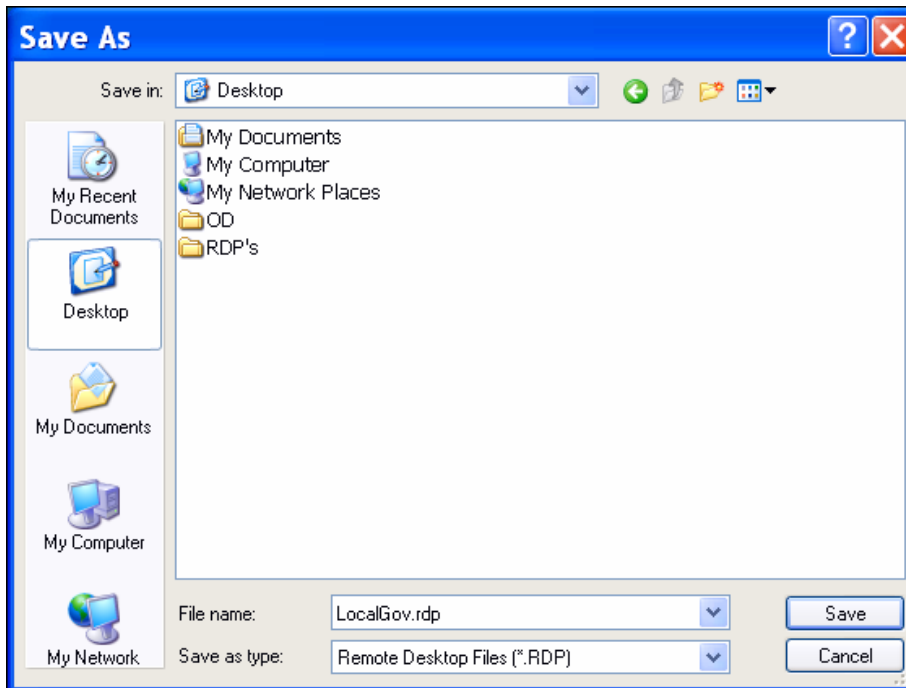
In the "Computer:" field specify the Name or IP address of the Windows Server that runs the Z Software.

Next click on the Display tab and change the Remote desktop size to 1024x768



After making the display change, click back on the General Tab.

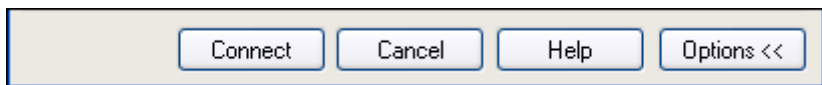
On the General tab click – “Save As..”



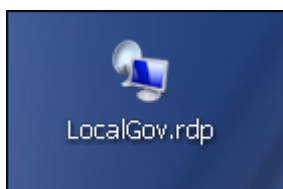
In the “Save in:” field specify “Desktop”

In the “File name:” field specify “LocalGov.rdp” then click SAVE.

Once the file is saved to the PC Desktop you will be returned to the Remote Desktop Connection window and there you can click “Cancel” to return to the PC Desktop.



The image below shows what the RDP connection Icon and description looks like on the PC Desktop.



Next to customize the Size of the RDP window follow these steps.

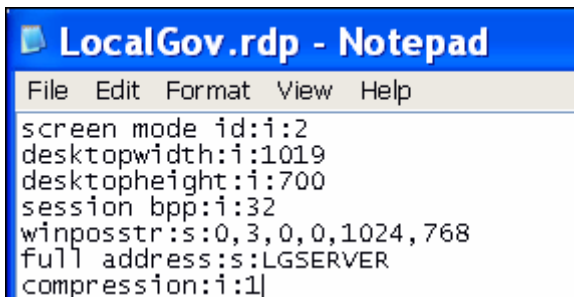
Right-Click the LocalGov.rdp file and select “Open With” and then NotePad.

This will open the RDP connection with the windows application Notepad and allow you to customize the settings within the file using a text editor. Below is a example of what the first 7 lines of the file will look like when you first open it with NotePad.



```
LocalGov.rdp - Notepad
File Edit Format View Help
screen mode id:i:2
desktopwidth:i:1024
desktopheight:i:768
session bpp:i:32
winposstr:s:0,3,0,0,800,600
full address:s:LGSERVER
compression:i:1
```

Change the desktopwidth, desktopheight and winposstr settings to the example below:



```
LocalGov.rdp - Notepad
File Edit Format View Help
screen mode id:i:2
desktopwidth:i:1019
desktopheight:i:700
session bpp:i:32
winposstr:s:0,3,0,0,1024,768
full address:s:LGSERVER
compression:i:1
```

Once you have the changes above made, exit from NotePad and Save the changes.

Launch the RDP connection by double-clicking the RDP icon on the PC Desktop.



Complete the authentication details on the connection window:



Note – you will have to use a Username and Password combination that is setup on your windows server. Above is just a example. Once you connect and login the RDP window should run “custom sized” on the PC Desktop so that is covers up the entire desktop (for a full screen look) but does not cover up the START bar, or System Tray.

The examples below shows what this looks like while on the Main Menu and when printing a report to the VIEW printer.

LocalGov - zsupport - Remote Desktop

XX9800 - System Menu


Available Systems

- 01..General Ledger
- 02..Accounts Payable
- 03..Payroll
- 04..Inventory Control
- 05..Fixed Assets
- 06..Vehicle Maintenance
- 07..Work Orders
- 08..Utility Billing
- 09..Business License
- 10..New Property Tax
- 11..Point of Sale
- 12..Misc Receipts
- 13..Accounts Receivable
- 14..CTRAC
- 15..Court Docket
- 16..System Wide Parameters

Available Options
Utility Billing

- 01..Customer Inquiry
- 02..File Maintenance
- 03..Cash Receipts
- 04..Meter Readings
- 05..Billing
- 06..Delinquent Accounts
- 07..Miscellaneous Reports
- 08..Office Manager
- 09..User Profiles
- 10..Period End Process
- 11..Audit Trail
- 12..Night Process
- 13..On-Line Documentation
- 14..Software Release Notes
- 50..Special Site Options
- 51..User Reports
- 52..Utilities
- 53..Spooler
- 70..Service Orders
- 71..Weather Tracking
- 72..Old Transformer Mgmt
- 73..Power Outages
- 74..TVA Reporting
- 75..ACH Bank Drafts
- 76..TVA Special Programs

Local Government Data Processing Corporation



WELCOME!!!

GUI Interface for Zortec Software

System Messages can be maintained by editing the text file located in:

[Serverdrive]:\MSG\SYSTEM\MSG.TXT

Exit (Esc) OK (F9) Enter

Local Government THMSGUI 03/19/2008 11:35:31

start Inbox - Micro... LGDPC Cust... Document2 - ... LocalGov - zs... 11:35 AM

Date: 3/19/2008
Time: 11:36

Local Government
Accounts Receivable Detail

Page: 1
Id: UB7610

Account No	Customer Name	Status	Total	-----Aging-----				Pending	-----Last Payment-----	
				Current	30-60	60-90	90+			
005-3000-01	FRANKS, EVAN	A	203.00	203.00	0.00	0.00	0.00	0.00	11/09/2007	0.00
005-3050-01	SMITH, ELLA	A	807.82	807.82	0.00	0.00	0.00	0.00	11/09/2007	0.00
005-3055-01	CLAUSEN, ELLA	A	396.89	401.45	-4.56	0.00	0.00	0.00	11/09/2007	0.00
005-3057-01	FULMER, ELLA	A	34.12	34.37	-0.25	0.00	0.00	0.00	11/09/2007	0.00
005-3059-01	FRANKS, ELLA	A	74.63	52.48	5.60	5.60	10.95	0.00	2/13/2007	0.00
005-3061-01	OAKLEY, ELLA	A	313.16	498.45	19.54	5.35	-210.18	0.00	2/13/2007	0.00
005-3100-01	CLAUSEN, AMY	A	459.94	459.94	0.00	0.00	0.00	0.00	11/09/2007	0.00
005-3125-01	FULMER, AMY	A	31641.32	31641.32	0.00	0.00	0.00	0.00	11/15/2007	0.00
005-3149-01	OAKLEY, AMY	A	11068.36	10932.46	135.90	0.00	0.00	0.00	11/28/2007	0.00
005-3150-01	SMITH, JESSICA	A	2629.77	2585.47	44.30	0.00	0.00	0.00	11/28/2007	0.00
005-3151-01	CLAUSEN, JESSICA	A	184.11	172.54	11.57	0.00	0.00	0.00	11/28/2007	0.00
005-3160-01	FRANKS, JESSICA	A	23.79	22.67	1.12	0.00	0.00	0.00	11/28/2007	0.00
005-3175-02	SMITH, THOMAS	A	1442.97	1442.97	0.00	0.00	0.00	0.00	11/09/2007	0.00
005-3200-01	FULMER, THOMAS	A	724.54	724.54	0.00	0.00	0.00	0.00	11/15/2007	0.00
005-3205-01	FRANKS, THOMAS	A	263.76	263.76	0.00	0.00	0.00	0.00	11/15/2007	0.00
005-3225-02	SMITH, TIM	A	5470.70	5470.70	0.00	0.00	0.00	0.00	11/15/2007	0.00
005-3230-01	CLAUSEN, TIM	A	2459.02	2459.02	0.00	0.00	0.00	0.00	11/15/2007	0.00
005-3250-01	FULMER, TIM	A	1039.97	1039.97	0.00	0.00	0.00	0.00	11/09/2007	0.00
005-3275-01	FRANKS, TIM	A	67.11	67.11	0.00	0.00	0.00	0.00	11/05/2007	0.00
005-3277-01	OAKLEY, TIM	A	757.67	757.67	0.00	0.00	0.00	0.00	11/05/2007	0.00
005-3300-01	SMITH, JASON	A	2777.12	2673.03	104.09	0.00	0.00	0.00	11/19/2007	0.00
005-3325-02	FULMER, JASON	A	494.23	494.23	0.00	0.00	0.00	0.00	11/09/2007	0.00
005-3350-01	FRANKS, JASON	A	692.01	692.01	0.00	0.00	0.00	0.00	11/19/2007	0.00
005-3360-02	SMITH, JUSTIN	A	318.53	318.53	0.00	0.00	0.00	0.00	11/09/2007	0.00
005-3370-01	CLAUSEN, JUSTIN	A	2793.54	2793.54	0.00	0.00	0.00	0.00	11/13/2007	0.00
005-3375-03	SMITH, KATIE	A	83.53	83.53	0.00	0.00	0.00	0.00	11/13/2007	0.00
005-3400-03	FRANKS, KATIE	A	3407.47	3407.47	0.00	0.00	0.00	0.00	11/13/2007	0.00
005-3425-01	OAKLEY, KATIE	A	165.16	165.16	0.00	0.00	0.00	0.00	11/21/2007	0.00
005-3450-01	SMITH, BETH	A	440.01	440.01	0.00	0.00	0.00	0.00	11/15/2007	0.00
005-3455-01	CLAUSEN, BETH	A	59.45	59.45	0.00	0.00	0.00	0.00	11/13/2007	0.00
005-3480-02	OAKLEY, BETH	A	4562.16	4562.16	0.00	0.00	0.00	0.00	11/20/2007	0.00
005-3500-02	CLAUSEN, EVAN	A	633.81	633.81	0.00	0.00	0.00	0.00	11/20/2007	0.00
005-3525-03	OAKLEY, EVAN	A	177.05	177.05	0.00	0.00	0.00	0.00	11/20/2007	0.00
005-3535-02	CLAUSEN, ELLA	A	31.76	31.76	0.00	0.00	0.00	0.00	11/20/2007	0.00
005-3550-02	FRANKS, ELLA	A	12367.22	12367.22	0.00	0.00	0.00	0.00	11/15/2007	0.00
005-3675-01	FULMER, JESSICA	A	231.92	231.92	0.00	0.00	0.00	0.00	11/15/2007	0.00
005-3685-01	FRANKS, JESSICA	A	323.62	323.62	0.00	0.00	0.00	0.00	11/13/2007	0.00
005-3700-01	SMITH, THOMAS	A	7886.45	7886.45	0.00	0.00	0.00	0.00	11/13/2007	0.00
005-3725-01	CLAUSEN, THOMAS	A	28.96	28.96	0.00	0.00	0.00	0.00	11/13/2007	0.00
005-3750-01	FULMER, THOMAS	A	4700.80	4700.80	0.00	0.00	0.00	0.00	11/13/2007	0.00
005-3752-01	FRANKS, THOMAS	A	618.04	618.04	0.00	0.00	0.00	0.00	11/13/2007	0.00
005-3775-01	OAKLEY, THOMAS	A	184.89	184.89	0.00	0.00	0.00	0.00	11/13/2007	0.00
005-3800-01	SMITH, TIM	A	114.03	114.03	0.00	0.00	0.00	0.00	11/13/2007	0.00
005-3825-01	CLAUSEN, TIM	A	575.38	575.38	0.00	0.00	0.00	0.00	11/13/2007	0.00
005-3850-01	FULMER, TIM	A	27.42	27.42	0.00	0.00	0.00	0.00	11/13/2007	0.00
005-3875-01	FRANKS, TIM	A	4890.81	4890.81	0.00	0.00	0.00	0.00	11/15/2007	0.00
005-3900-02	SMITH, JASON	A	4140.85	4140.85	0.00	0.00	0.00	0.00	11/13/2007	0.00
005-3925-02	FULMER, JASON	A	1260.51	1260.51	0.00	0.00	0.00	0.00	11/13/2007	0.00
005-3975-02	OAKLEY, JASON	A	558.46	558.46	0.00	0.00	0.00	0.00	11/13/2007	0.00